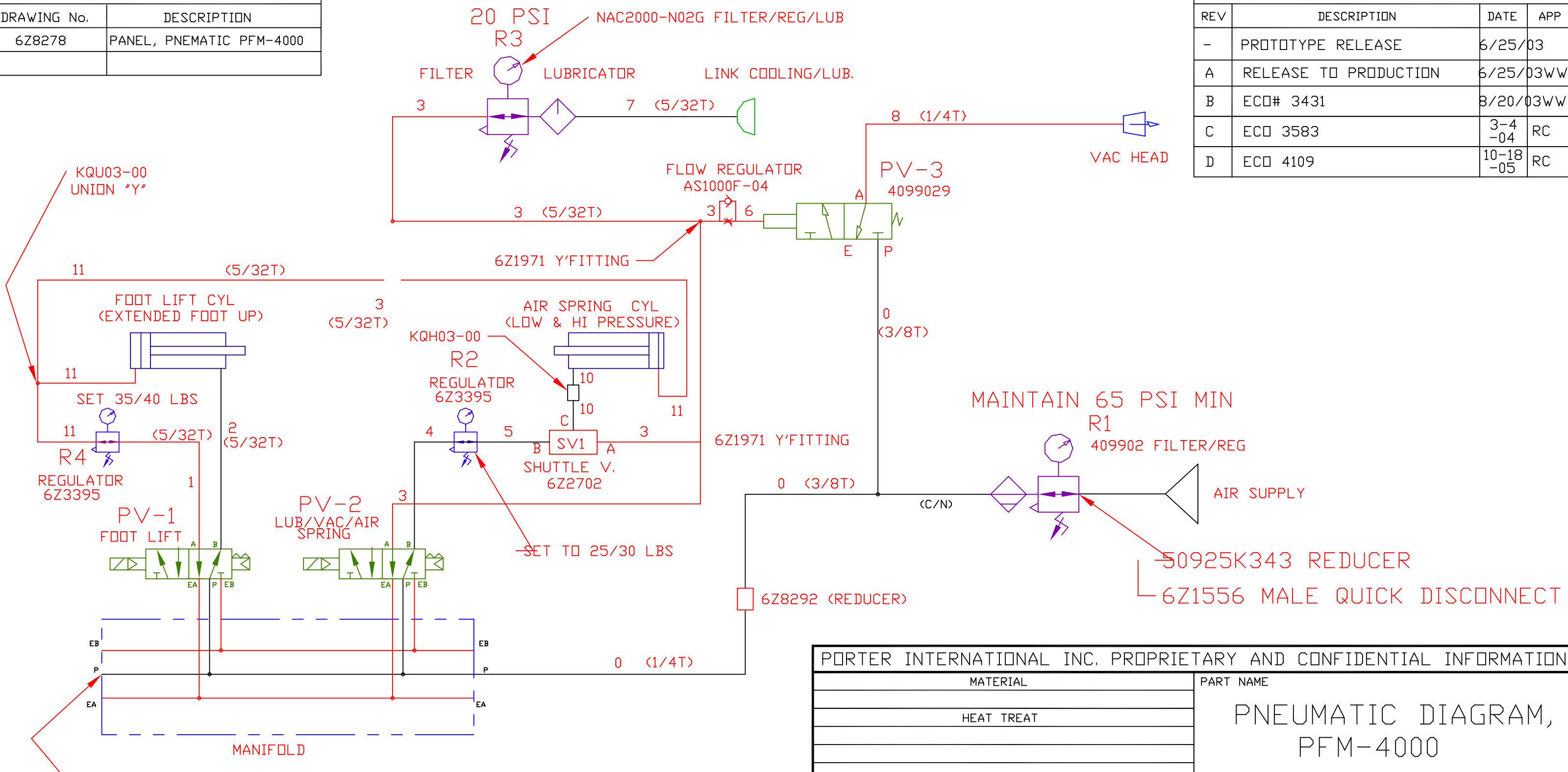


USED ON	
DRAWING No.	DESCRIPTION
6Z8278	PANEL, PNEUMATIC PFM-4000

REVISIONS			
REV	DESCRIPTION	DATE	APP
-	PROTOTYPE RELEASE	6/25/03	
A	RELEASE TO PRODUCTION	6/25/03WW	
B	ECD# 3431	8/20/03WW	
C	ECD 3583	3-4-04	RC
D	ECD 4109	10-18-05	RC



*KQH11-34S FITTING, 1/8NPT, 3/8 TUBE

DIMENSIONS
IN INCHES
AND APPLY
AFTER
PROCESSING

PORTER INTERNATIONAL INC. PROPRIETARY AND CONFIDENTIAL INFORMATION	
MATERIAL	PART NAME
HEAT TREAT	PNEUMATIC DIAGRAM, PFM-4000
TOLERANCES (EXCEPT AS NOTED)	
DECIMAL .00 ±	.000 ±
ANGULAR 1/2°	FINISH
DRAWN BY BILL WALEGA	DATE 6/25/03
SCALE	SH OF
SIZE B	DWG NO. 6Z8260

Porter PORTER INTERNATIONAL INC.
388 NEWBURYPORT TURNPIKE
ROWLEY, MA 01969 (978) 948-8288