



## *ME-104*

### *Mattress Auto Packaging System*

The ME-104 provides you with a highly efficient wrapping system that produces some of the cleanest, tightly wrapped beds in the bedding market. Unique "Cold Seal" technology ensures secure double seals unlike any other in the industry.

**MERELLO**<sup>TM</sup>  
INGENIEROS S.L.

*A great deal of value in every machine*

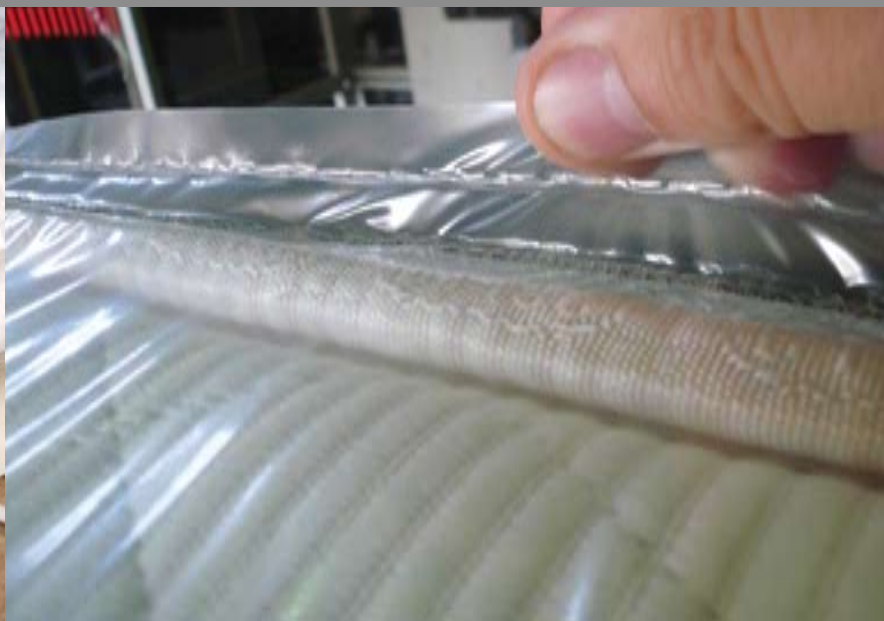


"Cold Seal" technology eliminates heat from the top bar, reducing two of your biggest wrapper problems... poor seals and wiring failures.

Most faulty seals occur where a hot top bar compresses excess film on your mattress corners. Additionally, since there is no heat on the top bar, there are no electrical wires to wear out through repetitive use cycles.

*A great deal of value in every machine*

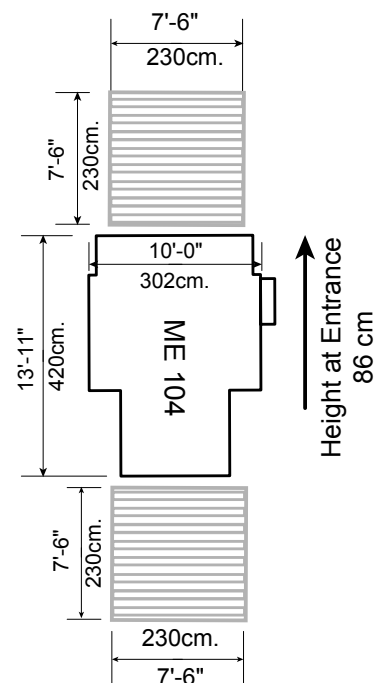




Optional cart stacker accepts finished wrapped beds and self-loads onto cart.

- Self-adjusting system accepts mixed product length, width, and thickness, in any sequence for increased productivity and efficiency
- Smooth and fast movement, standard size mattresses can be packaged in under 15 seconds
- Auto side compression system for tight, secure film encased mattress
- Automatic film side trim yields a neat finished packaged mattress
- Optional double-seal available for a more secure package
- Compact design minimizes floor space
- Touch screen for user-friendly operations

SPECIFICATION	ME104
Max width of infeed / Max ancho de alimentación	88 in/ 224cm
Min width of infeed / Min. ancho de alimentación	70 in/ 178cm
Max height under pressure roller / Max altura debajo del rodillo de presión	20 in/ 51cm
Roll capacity, top & bottom / Capacidad del rollo, superior e inferior (12" DIA)	4
Infeed/outfeed conveyor height	35 in/ 89cm
Overall height / Altura total	75 in/ 191cm
Max film width / Max ancho del plástico	120/ 305cm
Film width: Top / Ancho del plástico Superior	120/ 305cm
Film width: Bottom / Ancho del plástico Inferior	120/ 305cm
Boot roll dia / Diámetro del rollo de refuerzo 10 NORMAL - 12 MAX	15in / 38cm
Voltage / Voltaje	220 Volt, 1 PH
Current (amps) / Amperaje (amperios)	25
Air consumption (cfm) / Consumo de aire (cfm)	35
Air pressure / Presión de aire	80 psi / 6 bar
Machine Weight / Peso de la máquina	12000 lbs/ 544kg
Production (units/minute)	up to 3





Global Systems Group® (GSG) is a collection of the world's leading mattress machinery companies. GSG is comprised of Gribetz International, Porter International, Galkin, Gateway Systems, Nähtec, Spuhl-Anderson and partner companies, Merello, Teknomac and KSL. These GSG machinery companies represent leading edge technology in computerized quilting machines and panel cutters; automated and conventional sewing machines; and mattress packaging equipment. Over 20 sales and service locations serve customers in every global region of the bedding market.



800-326-4742 954-846-0300 [www.GSGcompanies.com](http://www.GSGcompanies.com)

13800 NW 4th Street  
Sunrise, FL 33325 USA

